

# Installing a local web server

José Manuel Bouzán Matanza

From this version 6.0 Ardora creates a new kind of sites that need to be lodged in a web server to make them work. The aim of this tutorial is the installation in our computer of this web server so that **you can make “previews”** of these pages while you’re still creating the activity (you can also read the tutorial explaining how to create these “pages within a server”) with no need to “upload” the files to a server every time you change something.

For this installation we are going to use the Apache Web server, probably the most popular Web server in use on the Internet today. We also need to have PHP language installed. There are some projects on the internet to make this task easier. We will explain here that process using **AppServ** ([www.appservnetwork.com](http://www.appservnetwork.com)) because you can really install it in a minute without making any configuration.

We have to download it from the web mentioned before. At the moment of making this tutorial, there are two possible versions to be downloaded (in red). We will download the version **2.5.10**.



The screenshot shows the AppServ Open Project website. At the top left is a cartoon shark logo. The main header reads "AppServ Open Project". Below the header is a navigation bar with links for Home, Downloads, AddOns, Community, FAQ, and Stats Activity. The main content area features a "Main Menu" on the left with links like "What is AppServ?", "How to install AppServ", and "Download Now!". The central part of the page displays a news article titled "AppServ 2.5.10 and 2.6.0 with PHP6 New Released !!!" posted by "apples" on Saturday, May 10 @ 00:59:41 ICT (355976 reads). The article lists two versions: AppServ 2.5.10 and AppServ 2.6.0. For each version, it provides a list of dependencies (Apache, PHP, MySQL, phpMyAdmin), a "Download" link to Sourceforge.net, and an MD5SUM value.

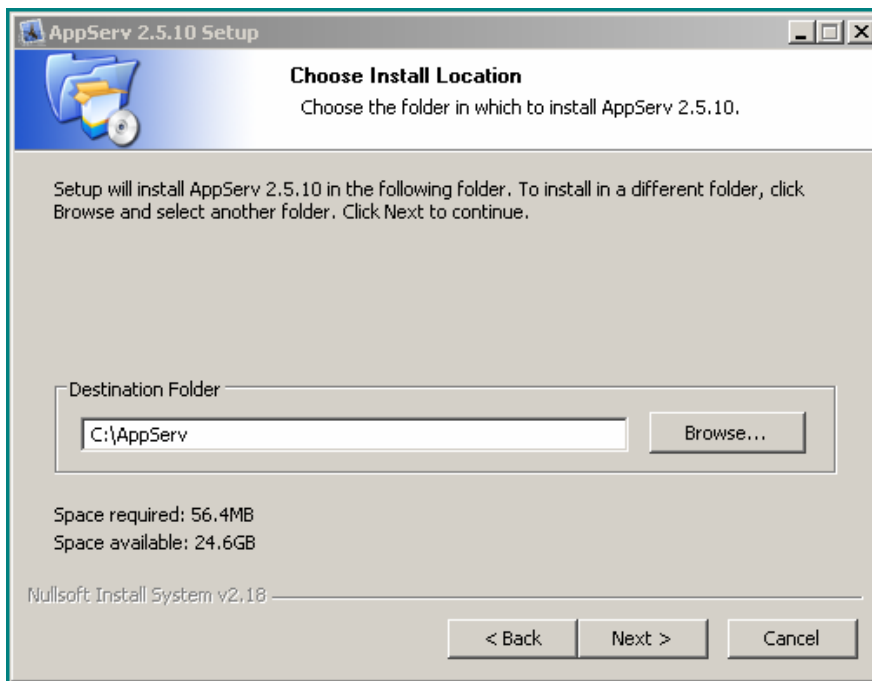
Home	Downloads	AddOns	Community	FAQ	Stats Activity
<b>Main Menu</b> <ul style="list-style-type: none"><li>What is AppServ?</li><li>How to install AppServ</li><li>How to use AppServ and directory structure</li><li>Developer Team</li><li>Download Now!</li><li>Version History</li><li>NEWS Archive</li><li>Community &amp; Support</li><li>Statistics Activity</li><li>Donate to AppServ</li></ul>	<b>AppServ 2.5.10 and 2.6.0 with PHP6 New Released !!!</b> <p>Posted by <a href="#">apples</a> on Saturday, May 10 @ 00:59:41 ICT (355976 reads)</p> <p><b>AppServ 2.5.10</b></p> <ul style="list-style-type: none"><li>• Apache 2.2.8</li><li>• PHP 5.2.6</li><li>• MySQL 5.0.51b</li><li>• phpMyAdmin-2.10.3</li></ul> <p><b>Download</b> <a href="http://prdownloads.sourceforge.net/appserv/appserv-win32-2.5.10.exe?c">Sourceforge.net</a> : <a href="http://prdownloads.sourceforge.net/appserv/appserv-win32-2.5.10.exe?c">http://prdownloads.sourceforge.net/appserv/appserv-win32-2.5.10.exe?c</a></p> <p><b>MD5SUM</b> : 279c0c39866fbecb8a3904969fd5d0f4</p> <p><b>AppServ 2.6.0</b></p> <ul style="list-style-type: none"><li>• Apache 2.2.8</li><li>• PHP 6.0.0-dev</li><li>• MySQL 6.0.4-alpha</li><li>• phpMyAdmin-2.10.3</li></ul> <p><b>Download</b> <a href="http://prdownloads.sourceforge.net/appserv/appserv-win32-2.6.0">Sourceforge.net</a> : <a href="http://prdownloads.sourceforge.net/appserv/appserv-win32-2.6.0">http://prdownloads.sourceforge.net/appserv/appserv-win32-2.6.0</a></p> <p><b>MD5SUM</b> : e3a108c9b17f3572e53c07f52d236481</p>				
<b>Lastest Release</b> <ul style="list-style-type: none"><li><b>AppServ</b><ul style="list-style-type: none"><li>↓ <a href="#">AppServ 2.6.0</a> 2008-06-10 00:35:27</li><li>↓ <a href="#">AppServ 2.5.10</a> 2008-06-10 00:33:27</li></ul></li><li><b>AppServ Misc</b><ul style="list-style-type: none"><li>↓ <a href="#">Zend Optimizer 3.3.0...</a></li></ul></li></ul>					

This version will install Apache 2.2.8, PHP 5.2.6 and two database applications. In our case, these database are not important since Ardora does not use database.

**It is highly recommended to download version 2.5.10** instead AppServ 2.6.0. as this one uses a PHP version still under development (PHP 6.0.0-dev).

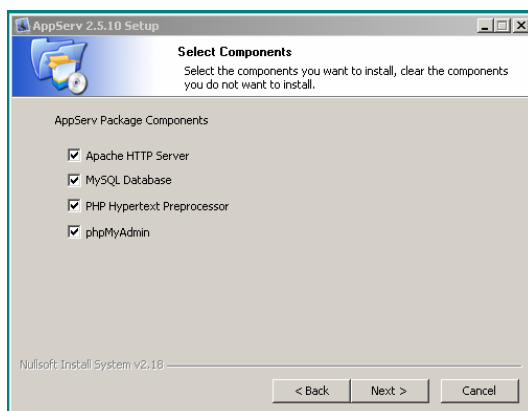
Clicking on the Sourceforge.net link, we are taken to the “download page”. (We have to download the file appserv-win32-2.5.10; As long as this project is being carried out, it is possible that these numbers change).

It is also likely that during the installation, the windows firewall asks for permission to “disable” this service. If so, allow it.



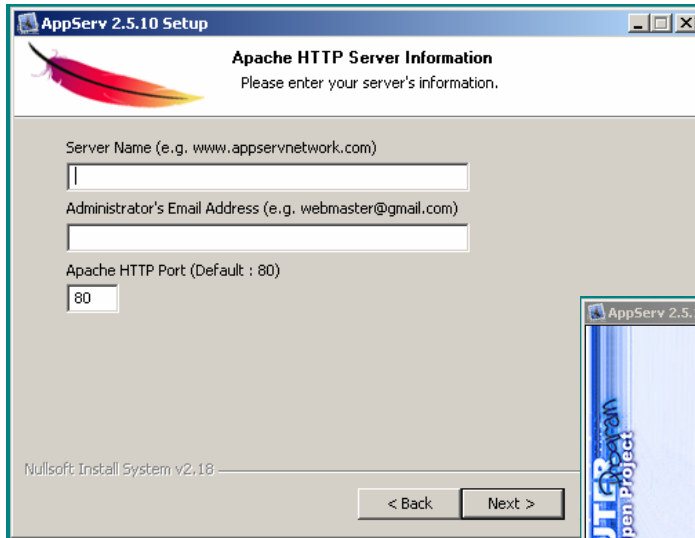
The installation process is similar to any other Windows software: We execute the “.exe” file we have just downloaded and follow the indications. After accepting the license agreement (GNU), we are asked for the folder where we are going to install the server (by default: c:\AppServ. If you decide to change it, remember NOT to use : “ñ, ç...”, written accents or blank spaces.

**Remember the name of this folder** as you are going to use it afterwards, in Ardora's setup.



When we click on “next”, we will find the following screen, where you must indicate which applications you wish to install. As we have already said, we only need the web server (Apache http Server) and the PHP language (PHP Hypertext Preprocessor). Nevertheless you can install the other two applications which make reference to the MySQL database (the proper database and phpMyAdmin, a MySQL editor) as they need little space in your hard disk and they will allow you to install Moodle, WrodPress, Joomla, or Drupal in your personal computer.

Then, you have to insert some data in this screen. These data are not important for our purpose, as this is not going to be an Internet server nor even a domain. So we must only write something “similar to” what they are asking for. I mean, on the first line we are asked to write the server's name, so we can write anything like “**www.anywordyoulike.com**” (Remember you mustn't use “ñ, ç...” nor “written accents” or “blank\_spaces”) On the next line we must enter an e-mail (again, it is not necessary that it actually exists), for example “mymail@ismine.com”. Do NOT change the final box.



To finish, you will be asked to start the server and the database (if you did install it). I recommend you to activate these options. So, you won't have to “launch” them every time you turn on your computer



**IMPORTANT:** Keep in mind that we have not installed a “normal” application with buttons, windows, etc. It is just a “service”. (Something working on our computer to allow us view some websites). That's why the options appearing on Start ---> Programmes ---> AppServ only serve to “launch” or “stop” this service.

Once we have installed the server in our computer, we must open Ardora and specify “where” the location of that server is. To do that, just click on the utilities menu, and select the option “Configure Ardora”. In the centre of the window we must choose “**Path to local server**” and click on the opening folder. Here, **we should indicate the location of the WWW folder, which is within another folder containing the web server.**

If you didn't alter any data during the installation process, the path to this folder must be: “c:\AppServ\www.”

**Ardora**

**Configuración inicial de la aplicación.**

Idioma:

Gallego       Portugués PT       Portugués BR  
 Castellano       Inglés       Ruso  
 Catalán       Francés       Rumano  
 Euskera       Aragonés       Asturiano

Fuente: Verdana, Arial, Helvetic: ▾


Tamaño: 12 ▾

Negrita       Itálica



Posición del enunciado:



Izquierda  
 Centro  
 Derecha  
 Justificado



Ruta al servidor local:



C:\AppServ\www 



Directorio:

Imágenes    \*.jpg

Sonidos    \*.au

Actividades    \*.ard

Actividades    \*.html

**Colores**

Fondo R 255 G 255 B 255

Selección R 255 G 255 B 0

Botones R 204 G 204 B 255

Fuente R 0 G 0 B 0

To save this data, click on the “accept” button (it is on the bottom left hand corner) and from that very moment, you will be able to “preview” also the “pages within a server” we have created. In fact, if after specifying that folder, you open any of these activities with Ardora you will see that the “preview” button (eye icon) is already fully activated.



